



SaniServ[®]
An AFFINIS GROUP Company

Item No. _____
Quantity _____
Job Name _____

Designed For High Volume Applications

20 Gal. per Hour & 20 Qt. Capacity – Per Side

High production and Two Flavors in a Floor Model Design

Model 724

Floor Model

Twin Flavor

Frozen Beverage Machine

The **SaniServ** Model 724 Floor Model Frozen Beverage Machine provides not one but two frozen beverage flavors in a high production floor model machine! The output and versatility of the 724 means owners and operators can offer two frozen best sellers. Because each side of the machine utilizes its own 2 HP refrigeration system, customers are always insured of getting their favorites!

Heavy-Duty

Floor Model Design – **SaniServ** model 724 provides a high volume of frozen beverages in the traditional floor model design. Operators will enjoy the ease of operation and the ability to utilize the 724's versatility to provide the different types of frozen beverages that customers want!

Easy Cleaning and Operation

Fewer Parts = Simplified Cleaning – **SaniServ** equipment is designed and built with the fewer parts to be disassembled, cleaned and sanitized than any other machine in the industry.

High Return on Investment

Increased Profits – **SaniServ** machines combine affordable efficiency with consistent product quality and fast quiet operation to insure customer satisfaction with high profit frozen beverages.

Quality Design

Durability – **SaniServ** machines are built to achieve long and dependable life through simplicity of design. Every machine is shipped standard with a stainless steel exterior, durable steel interior frame construction, heavy-duty components and consistency systems.

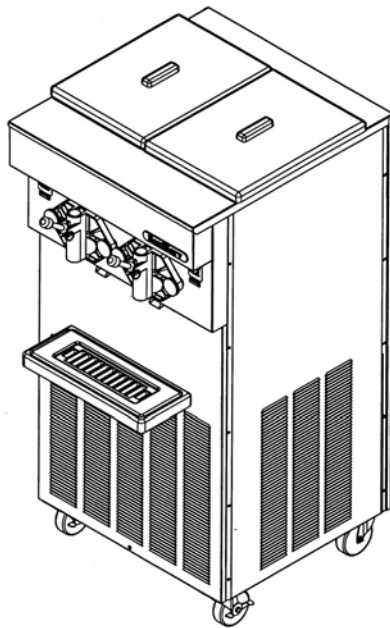


Made in the USA

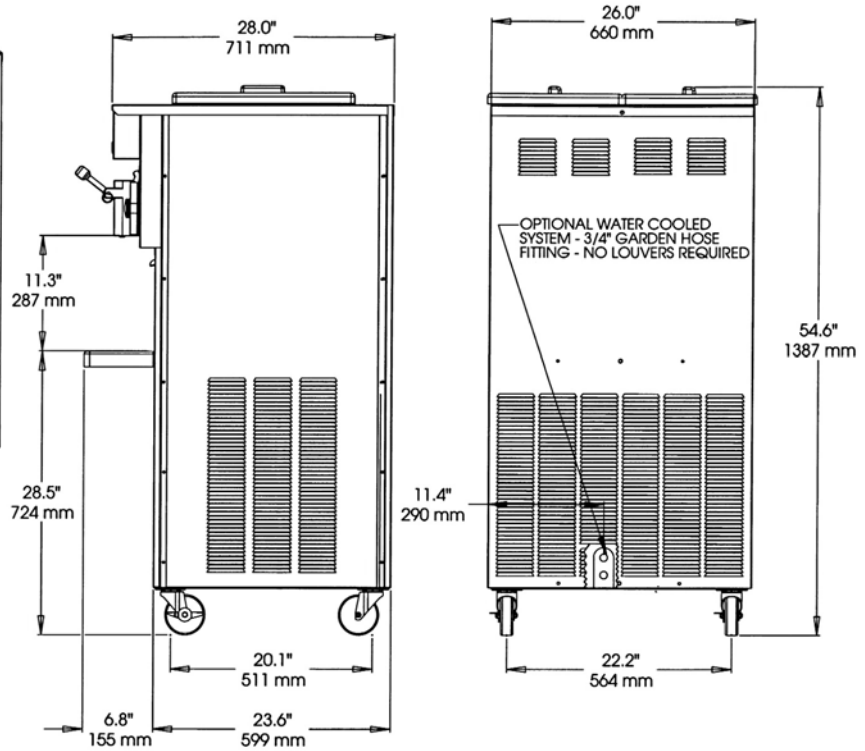
SaniServ Model 724

Floor Model Twin Head Frozen Beverage Freezer

For sales information contact:



Minimum Wall Clearance
Both Sides and Back -
6 inches (152 mm)



ELECTRICAL				WIDTH INCHES (mm)	HEIGHT INCHES (mm)	DEPTH INCHES (mm)	WEIGHT LBS. (Kg)	VOLUME CU FT. (cu. m.)
VOLTS	Hz	Ph.	Amps					
208-230	60	1	2x15	26 (660)	54.6 (1387)	28 (711)	501 (228)	
208-230	60	3	2x15					
Shipping Specifications				37 (940)	60 (1524)	41 (1024)	541 (246)	52.7 (1.49)

Specifications:

Cooling System: Air or Water

Dasher and Compressor Motors:

- (2) 1/2 HP Dasher
- (2) 2 HP Compressor

Refrigerant Type: R404A

Features:

Evaporator and Mix Reservoir Capacity: 20 Quarts (18.9 liters) per side

Dasher: Heavy-Duty Stainless Steel with low friction scraper blades.

Controls: Automatic consistency controls for improved product consistency.

Solid-state Automatic Visual Mix Out Alert System

Warranty:

- Parts 1 year
- Compressor 5 years
- Evaporator 5 years

Options:

- Tune Up Kit
- Parts Tray
- Drink Spinner
- Syrup Rail
- Wash Out Kit - 3/8" Flare Fitting
- Water Cooled -3/4" Garden Hose Fitting
- Export Voltage

We reserve the right to change specifications and product design without notice. Such revisions do not entitle the buyer to corresponding changes, improvements, additions or replacements for previously purchased equipment.



WWW.ZAMA-ENETRPRISE.COM
1-866-425-5669 Fax: 1-305-670-0044
Miami, FL 33156



Made in the USA